



# Recovery Series All-in-One Backup Appliances

## #1 All-in-One Enterprise Backup & Continuity

Unitrends Recovery Series all-in-one appliances combine software, storage, and compute into one box for easy-to-manage backup with built-in cloud integration.

Available as a scalable family of 12 models from 2 TB to 180 TB of storage.



The Unitrends solution was complete, supported all our servers and applications in our environment, was the easiest to use, had the best reliability, support and was very competitive in price.

Nicolas Daneau,  
TEC Group



Today's IT organization is facing the paradox of rapidly changing technology and data combined with increased demand for uptime. This double-edged sword requires IT to do more with less.

Only Unitrends can provide the all-in-one backup appliance that IT needs to keep pace with business. Unitrends helps your organization meet the challenge of growing data volumes and defense against ransomware by providing integrated appliances that simplify backup and recovery operations.

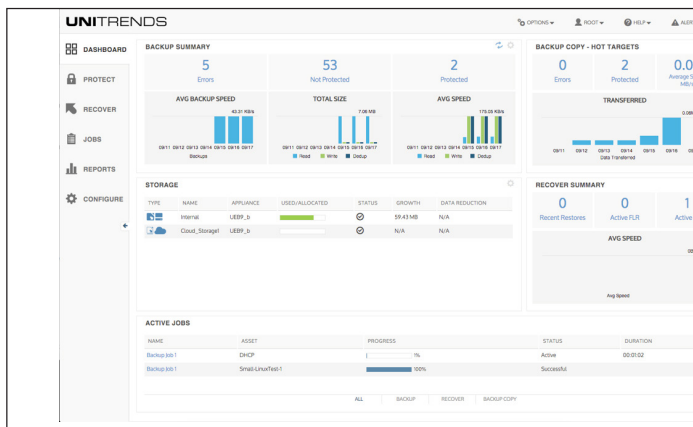
- **All-in-one backup appliance** includes CPU, disk, and networking as well as comprehensive data protection. All appliance models include adaptive in-line deduplication, instant recovery (Windows, VMware, Hyper-V), bare metal recovery, cloud integration, local archiving, and WAN optimized replication with encryption of data in flight and at rest.
- **Easy-to-use, intuitive, and centralized user interface** makes backup management efficient and scales to allow operations for multiple appliances and sites from a single pane of glass, lower operational costs and time burden on IT staff.
- **Next-generation hardware with tiered flash storage** provides improved backup performance, faster restore and recovery process, with greater scalability and flexibility. Included in models 814S and up.
- **Best-in-class protection across physical and virtual** servers as well as hundreds of operating systems and applications. Simplified administration enables seamless integration with physical and virtual applications.
- **Purpose-built hardware and hardened Linux-based** platform that isn't susceptible to malware and ransomware like Windows-based backup software.
- **"One throat to choke" with award-winning customer support.** Expert customer support engineers are available 24x7x52 and consistently achieve an industry-leading 98% customer satisfaction rate.

## Available in 12 All-In-One Integrated Appliance Models

From the remote office to the enterprise, Recovery Series appliances offer from 2 TB to 180 TB of raw storage, 8 GB to 256 GB memory, and 4 to 20 CPU cores, all managed from a single pane of glass.

### Comprehensive Data Protection & Recovery

- Designed to fit any infrastructure — Physical, virtual, and over 250 of versions of operating systems, hypervisors, and applications.
- Provides flexible data protection — Customizable backup strategies, multi-server scheduling, group management, and application aware protection.
- Includes local archiving — disk-to-disk-to-any (D2D2X) for long term retention and backup copy to removable media, including tape and SATA disk.
- WAN optimized replication — Combines adaptive deduplication, deduplication acceleration, compression, and encryption for secure byte-level data transmission.
- Delivers complete reporting to satisfy regulatory compliance requirements.
- Protects large scale deployments — Enhanced storage integration with NDMP NAS protection.
- Adaptive data deduplication — Combines global deduplication, inline deduplication, deduplication acceleration and in-place synthetics to speed up backups and optimizes storage capacity and WAN data transfer.



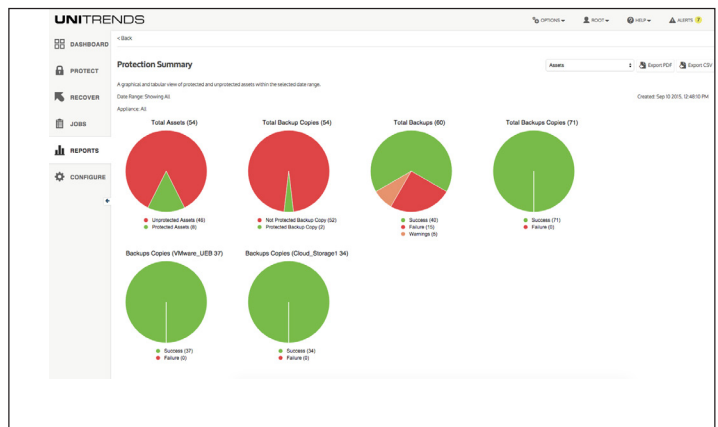
- Integration with easy-to-use RESTful API — Allows integration of Unitrends backup with custom applications.
- Highly intuitive user experience — Reduces management time by providing a dashboard view for identifying risk, solving problems, and managing storage.

### Complete Recovery

- Cloud-empowered disaster recovery and business continuity — Backup and recovery in the cloud with Unitrends No Limits Cloud™, Forever Cloud, and Disaster Recovery as a Service (DRaaS), or to 3rd party clouds including Amazon Web Services (AWS), Azure, and Google.
- Recovery Assurance — automated recovery testing for Windows physical, VMWare, and Hyper-V virtual environments for incredibly low cost testing and complete confidence in recovery (optional add-on).
- Near continuous data protection — Enable backups as often as every 60 seconds for world class Recovery Point Objectives (RPOs).
- Unitrends Bridge — Transforms your Windows servers into virtual machines in just one click, so you can instantly recover a down server without setting up new hardware.
- Unified Bare Metal — 1-pass dissimilar bare metal restore.

### Unparalleled Customer Support

- Free hardware for life — Enroll in our Pledge program for a free replacement appliance after year 4.
- Award-winning customer support — 98% customer satisfaction rating.



# Unitrends Recovery Series All-In-One Backup Appliances

Data Sheet

Recovery Series Appliance Family Specifications												
	602	604	606	608	814S	818S	824S	926S	928S	938S	944S	946S
Raw Capacity (TB)	2	4	6	8	12	16	24	36	72	96	120	180
Suggested Backup (TB)	1.1	2.4	3.6	4.8	7.2	9.4	15	22	44	63	80	118
Form Factor	Short	Short	Short	Short	1U	1U	2U	2U	2U	3U	4U	4U
Processor Cores/Threads	4/4	4/4	8/8	8/8	4/8	4/8	16/32	16/32	16/32	16/32	20/40	20/40
RAM (GB)	8	8	16	16	16	32	64	128	256	256	256	256
AES-NI	✗	●	●	●	●	●	●	●	●	●	●	●
IPMI	✗	✗	✗	✗	●	●	●	●	●	●	●	●
Hot Swap Drives	✗	✗	✗	✗	OS/Backup	OS/Backup	OS/Backup	OS/Backup	OS/Backup	OS/Backup	OS/Backup	OS/Backup
PCI Slots	✗	✗	✗	✗	2	2	5	5	5	5	5	5
<b>STORAGE</b>	<b>602</b>	<b>604</b>	<b>606</b>	<b>608</b>	<b>814S</b>	<b>818S</b>	<b>824S</b>	<b>926S</b>	<b>928S</b>	<b>938S</b>	<b>944S</b>	<b>946S</b>
SSD Flash (in GBs)	✗	✗	✗	✗	128	128	128	128	128	256	256	256
OS Disk (in TBs)	✗	✗	✗	✗	✗	✗	2x1	2x1	2x1	2x1	2x2	2x2
Backup Disk (in TBs)	2x2	2x4	2x6	2x8	4x4	4x8	8x4	8x6	11x8	16x8	34x4	34x6
RAID	1	1	1	1	5	10	1/6	1/6	1/6	1/60	1/60	1/60
NDMP (EMC, NetApp)	✗	✗	✗	✗	○	○	○	○	○	○	○	○
<b>ARCHIVING CONTROLLER</b>	<b>602</b>	<b>604</b>	<b>606</b>	<b>608</b>	<b>814S</b>	<b>818S</b>	<b>824S</b>	<b>926S</b>	<b>928S</b>	<b>938S</b>	<b>944S</b>	<b>946S</b>
USB 3.0	●	●	●	●	●	●	●	●	●	●	●	●
eSATA - 4 Port	✗	✗	✗	✗	●	●	●	●	●	●	●	●
SAS Controller (Disk, Tape)	✗	✗	✗	✗	○	○	○	○	○	○	○	○
<b>MAJOR FEATURES</b>	<b>602</b>	<b>604</b>	<b>606</b>	<b>608</b>	<b>814S</b>	<b>818S</b>	<b>824S</b>	<b>926S</b>	<b>928S</b>	<b>938S</b>	<b>944S</b>	<b>946S</b>
Adaptive Deduplication	●	●	●	●	●	●	●	●	●	●	●	●
Heterogeneous - Physical, Virtual, Unified	●	●	●	●	●	●	●	●	●	●	●	●
Cloud Enabled	●	●	●	●	●	●	●	●	●	●	●	●
Replication Target & Cross Replicate	●	●	●	●	●	●	●	●	●	●	●	●
Hot/Cold & Dissimilar Bare Metal	●	●	●	●	●	●	●	●	●	●	●	●

● Included ○ Optional ✗ Not Available

# Unitrends Recovery Series All-In-One Backup Appliances

Data Sheet

AES-256 Bit Encryption	●	●	●	●	●	●	●	●	●	●	●	●
Instant Recovery (P2V); (V2V); (V2P)	●	●	●	●	●	●	●	●	●	●	●	●
Recovery Assurance for vSphere, Hyper-V, & Windows Physical	○	○	○	○	○	○	○	○	○	○	○	○
1 GB Ethernet Ports	1	1	1	1	2	2	2	2	2	2	2	2
4x1 GB Ethernet	✘	✘	✘	✘	○	○	○	○	○	○	○	○
2x10 GB Ethernet*	✘	✘	✘	✘	○	○	●	●	●	●	●	●
1x8 GB Fibre Channel	✘	✘	✘	✘	○	○	○	○	○	○	○	○
<b>MONITORING &amp; MANAGEMENT</b>	<b>602</b>	<b>604</b>	<b>606</b>	<b>608</b>	<b>814S</b>	<b>818S</b>	<b>824S</b>	<b>926S</b>	<b>928S</b>	<b>938S</b>	<b>944S</b>	<b>946S</b>
Single Pane of Glass	●	●	●	●	●	●	●	●	●	●	●	●
Backup Scheduling	●	●	●	●	●	●	●	●	●	●	●	●
Inclusion/ Exclusion Backup	●	●	●	●	●	●	●	●	●	●	●	●
Bandwidth Throttling	●	●	●	●	●	●	●	●	●	●	●	●
Comprehensive Reporting	●	●	●	●	●	●	●	●	●	●	●	●
Alert-Based Monitoring	●	●	●	●	●	●	●	●	●	●	●	●
<b>PLATFORM CHARACTERISTICS</b>	<b>602</b>	<b>604</b>	<b>606</b>	<b>608</b>	<b>814S</b>	<b>818S</b>	<b>824S</b>	<b>926S</b>	<b>928S</b>	<b>938S</b>	<b>944S</b>	<b>946S</b>
Width (inches)	16.8 (426 mm)	16.8 (426 mm)	16.8 (426 mm)	16.8 (426 mm)	17.2 (437 mm)	17.2 (437 mm)	17.2 (437 mm)	17.2 (437 mm)	17.2 (437 mm)	17.2 (437 mm)	17.2 (437 mm)	17.2 (437 mm)
Height (inches)	1.7 (43 mm)	1.7 (43 mm)	1.7 (43 mm)	1.7 (43 mm)	1.7 (43 mm)	1.7 (43 mm)	3.5 (89 mm)	3.5 (89 mm)	3.5 (89 mm)	5.2 (132 mm)	7 (178 mm)	7 (178 mm)
Depth (inches)	14 (356 mm)	14 (356 mm)	14 (356 mm)	14 (356 mm)	25.6 (650 mm)	25.6 (650 mm)	25.5 (647 mm)	25.5 (647 mm)	25.5 (647 mm)	25.5 (647 mm)	27.5 (699 mm)	27.5 (699 mm)
Unit Weight (Pounds)	14 (6.4 kg)	14 (6.4 kg)	14 (6.4 kg)	14 (6.4 kg)	32 (14.5 kg)	32 (14.5 kg)	69 (31.3 kg)	69 (31.3 kg)	69 (31.3 kg)	93 (42.2 kg)	122 (55.3 kg)	122 (55.3 kg)
Shipping Weight (Pounds)	18 (8.2 kg)	18 (8.2 kg)	18 (8.2 kg)	18 (8.2 kg)	45 (20.4 kg)	45 (20.4 kg)	76 (34.5 kg)	76 (34.5 kg)	76 (34.5 kg)	100 (45.4 kg)	154 (69.9 kg)	154 (69.9 kg)
AC Inputs (VAC)	100/240	100/240	100/240	100/240	100/240	100/240	100/240	100/240	100/240	100/240	100/240	100/240
AC Power Consumption (W)	200	200	200	200	500	500	920	920	920	920	1000	1000
Redundant Power Supply	✘	✘	✘	✘	●	●	●	●	●	●	●	●
Heat Generated While Operating (BTUs)	1023	1023	1023	1023	2081	2081	3750	3750	3750	3750	4100	4100
Non-Operating Vibration	350	350	350	350	350	350	350	350	350	350	350	350
Operating Shock (2ms(Gs))	65	65	65	65	65	65	65	65	65	65	65	65
Non-Operating Shock (1ms(Gs))	350	350	350	350	350	350	350	350	350	350	350	350

● Included ○ Optional ✘ Not Available

\*2x10 Gb RJ45 Cooper is standard on the 824S and up. SFP+ Fiber can optionally be added.